

The Thirty-Third Hawaii State Legislature 2025 Regular Session

Maps Representatives and Senators By District

Courtesy of the Hawaii Public Access Room (PAR)

Phone: (808) 587-0478 Email: par@capitol.hawaii.gov Website: lrb.hawaii.gov/par

 Facebook: [PublicAccessRoom](https://www.facebook.com/PublicAccessRoom)  YouTube: [Hawaii Public Access Room](https://www.youtube.com/HawaiiPublicAccessRoom)  Instagram [publicaccessroom](https://www.instagram.com/publicaccessroom)

TABLE OF CONTENTS

Hawaii Island

House of Representative Districts	3
Senate Districts	4

Maui, Moloka'i, Lana'i, and Kaho'olawe

House of Representative Districts	5
Senate Districts	6

Oahu

East Honolulu, House of Representative Districts	7
Urban Honolulu, House of Representative Districts.....	8
Central, House of Representative Districts.....	9
Ewa Plains/Leeward, House of Representative Districts.....	10
North Shore/Windward, House of Representative Districts	11
Honolulu, Senate Districts	12
Ewa Plains/Central/Leeward, Senate Districts	13
North Shore/Windward, Senate Districts.....	14

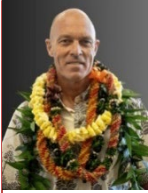
Kaua'i and Ni'ihau

House of Representative and Senate Districts	15
--	----

Legislative district maps are courtesy of the Hawaii State Office of Planning GIS Program.

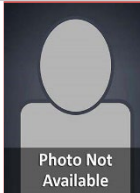
<http://planning.hawaii.gov/gis/>

**HAWAII ISLAND
HOUSE OF REPRESENTATIVES DISTRICTS**



Representative **Matthias Kusch (D)**
 Hawaii State Capitol, Room 311
 Phone 808-586-6680
 Fax 808-586-6684
 E-Mail: repkusch@capitol.hawaii.gov

H District 1: Hamakua, portion of Hilo, Ka'ūmana



Representative **Sue L. Keohokapu- Lee Loy (D)**
 Hawaii State Capitol, Room 332
 Phone 808-586-6120
 Fax 808-586-6121
 E-Mail: repkeohokapuleeloy@capitol.hawaii.gov

H District 2: Hilo



Representative **Chris Todd (D)**
 Hawaii State Capitol, Room 443
 Phone 808-586-8480
 Fax 808-586-8484
 E-Mail: reptodd@capitol.hawaii.gov

H District 3: Portion of Hilo, Keaukaha, Orchidlands Estate, Ainaloa, Hawaiian Acres, Fern Acres, portions of Kurtistown and Kea'au



Representative **Greggor Ilagan (D)**
 Hawaii State Capitol, Room 419
 Phone 808-586-6530
 Fax 808-586-6531
 E-Mail: repilagan@capitol.hawaii.gov

H District 4: Hawaiian Paradise Park, Hawaiian Beaches, Nānāwale Estates, Leilani Estates



Representative **Jeanne Kapela (D)**
 Hawaii State Capitol, Room 418
 Phone 808-586-9605
 Fax 808-586-9608
 E-Mail: repkapela@capitol.hawaii.gov

H District 5: Portions of Kea'au, and Kurtistown, Mountain View, Glenwood, Fern Forest, Volcano, Pāhala, Punalu'u, Nā'ālehu, Wai'ōhinu, Hawaiian Ocean View, Ho'okena



Representative **Kirstin Kahaloa (D)**
 Hawaii State Capitol, Room 403
 Phone 808-586-8530
 Fax 808-586-8534
 E-Mail: repkahaloa@capitol.hawaii.gov

H District 6: Hōnaunau, Nāpo'opo'o, Captain Cook, Kealakekua, Keauhou, Hōlualoa, Kailua-Kona



Representative **David A. Tarnas (D)**
 Hawaii State Capitol, Room 442
 Phone 808-586-8510
 Fax 808-586-8514
 E-Mail: reptarnas@capitol.hawaii.gov

H District 8: Hawi, Hala'ula, Waimea, Makahalau, Waiki'i, Waikoloa, Kawaihae, and Māhukona



Representative **Nicole E. Lowen (D)**
 Hawaii State Capitol, Room 436
 Phone 808-586-586-8400
 Fax 808-586-586-8404
 E-Mail: replowen@capitol.hawaii.gov

H District 7: Kailua-Kona, Honokohau, Kalaoa, Pu'uana'hulu, Puako, portion of Waikoloa

HAWAII ISLAND SENATE DISTRICTS



Senator Herbert M. "Tim" Richards III (D)
 Hawaii State Capitol, Room 202
 Phone 808-586-6760
 Fax 808-586-6689
 E-Mail: senrichards@capitol.hawaii.gov

S District 4: North Hilo, Hāmākua, Kohala, Waimea, Waikoloa, North Kona



Senator Lorraine R. Inouye (D)
 Hawaii State Capitol, Room 210
 Phone 808-586-7335
 Fax 808-586-7339
 E-Mail: seninouye@capitol.hawaii.gov

S District 1: Hilo, Paukaʻa, Papaikou, Pepeʻekeo



Senator Dru Mamo Kanuha (D)
 Hawaii State Capitol, Room 206
 Phone 808-586-9385
 Fax 808-586-9391
 E-Mail: senkanuha@capitol.hawaii.gov

S District 3: Kona, Kaʻū, Volcano



Senator Joy A. San Buenaventura (D)
 Hawaii State Capitol, Room 213
 Phone 808-586-6890
 Fax 808-586-6899
 E-Mail: sensanbuenaventura@capitol.hawaii.gov

S District 2: Puna

**MAUI, MOLOKA'I, LANA'I, and KAHO'OLAWE
HOUSE OF REPRESENTATIVES DISTRICTS**



Representative Elle Cochran (D)
 Hawaii State Capitol, Room 315
 Phone 808-586-6160
 Fax 808-586-6161
 E-Mail: repcochran@capitol.hawaii.gov

H District 14: Kahakuloa, Waihe'e, portions of Wai'eahu and Mā'alaea, Olowalu, Lahaina, Lahainaluna, Kā'anapali, Māhinahina Camp, Kahana, Honokahua



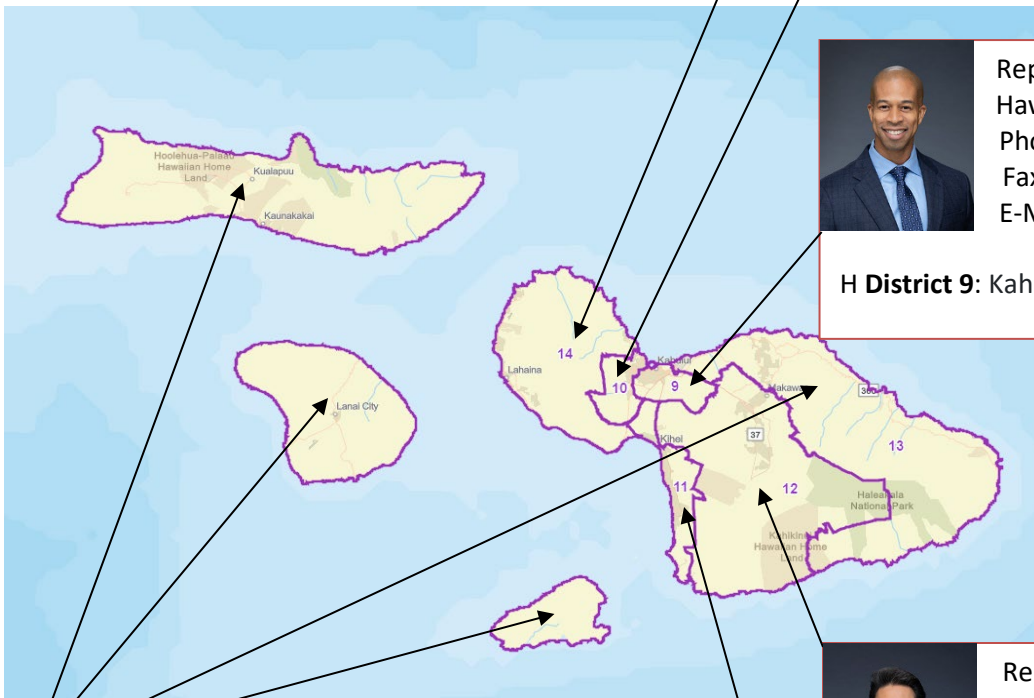
Representative Tyson K. Miyake (D)
 Hawaii State Capitol, Room 421
 Phone 808-586-9444
 Fax 808-586-9499
 E-Mail: repmiyake@capitol.hawaii.gov

H District 10: Portion of Waiehu, Paukukalo, Wailuku, Wailuku Heights, Waikapu, Hyashi Village



Representative Justin H. Woodson (D)
 Hawaii State Capitol, Room 405
 Phone 808-586-6210
 Fax 808-586-6211
 E-Mail: repwoodson@capitol.hawaii.gov

H District 9: Kahului, Pu'unēnē, portion of Wailuku



Representative Mahina M. Poepeo (D)
 Hawaii State Capitol, Room 331
 Phone 808-586-6790
 Fax 808-586-6779
 E-Mail: reppoepeo@capitol.hawaii.gov

H District 13: Moloka'i, Lāna'i, Kaho'olawe, portion of Kahului, Ha'ikū, Pe'ahi, Huelo, Nāhiku, Hāna, Kīpahulu



Representative Kyle T. Yamashita (D)
 Hawaii State Capitol, Room 306
 Phone 808-586-6200
 Fax 808-586-6201
 E-Mail: repyamashita@capitol.hawaii.gov

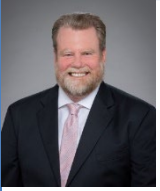
H District 12: Portion of Keāhua, Hāli'imaile, Pukalani, Makawao, Pūlehu, Waiakoa, Kēōkea, and 'Ulupalakua



Representative Terez Amato (D)
 Hawaii State Capitol, Room 328
 Phone 808-586-8525
 Fax 808-586-8529
 E-Mail: repamato@capitol.hawaii.gov

H District 11: Portion of Mā'alaea, Kīhei, Keawakapu, Wailea, Mākena, Kanahena, Keone'ō'io

MAUI, MOLOKA'I, LANA'I, and KAHO'OLAWE
SENATE DISTRICTS



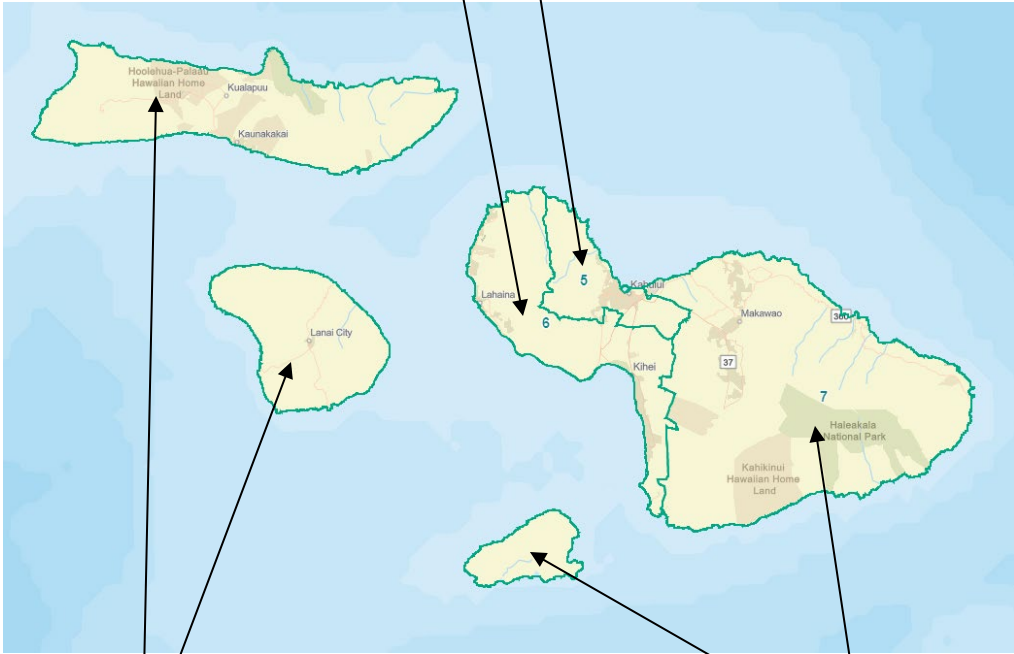
Senator Angus L.K. McKelvey (D)
Hawaii State Capitol, Room 221
Phone 808-586-6070
Fax 808-586-6071
E-Mail: senmckelvey@capitol.hawaii.gov

S District 6: West Maui, Mā‘alaea, Waikapū, South Maui



Senator Troy N. Hashimoto (D)
Hawaii State Capitol, Room 222
Phone 808-586-7344
Fax 808-586-7348
E-Mail: senhashimoto@capitol.hawaii.gov

S District 5: Wailuku, Kahului, Waihe‘e, Waikapu Mauka, Wai‘ehu



Senator Lynn DeCoite (D)
Hawaii State Capitol, Room 230
Phone 808-587-7225
Fax 808-587-7230
E-Mail: sendecoite@capitol.hawaii.gov

S District 7: Hāna, East and Upcountry Maui, Molokai, Lāna‘i, Kaho‘olawe and Molokini

**EAST HONOLULU OAHU
HOUSE OF REPRESENTATIVES DISTRICTS**



Representative **Adrian K. Tam (D)**
 Hawaii State Capitol, Room 402
 Phone 808-586-8520
 Fax 808-586-8524
 E-Mail: reptam@capitol.hawaii.gov

H District 24: Waikīkī



Representative **Andrew Takuya Garrett (D)**
 Hawaii State Capitol, Room 323
 Phone 808-586-8475
 Fax 808-586-8479
 E-Mail: repgarrett@capitol.hawaii.gov

H District 22: Mānoa



Representative **Jackson Sayama (D)**
 Hawaii State Capitol, Room 443
 Phone 808-586-6900
 Fax 808-586-6910
 E-Mail: repsayama@capitol.hawaii.gov

H District 21: Wilhelmina Rise, Maunalani Heights, St. Louis Heights



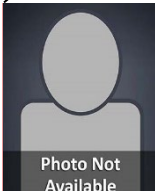
Representative **Gene Ward (R)**
 Hawaii State Capitol, Room 319
 Phone 808-586-6420
 Fax 808-586-6421
 E-Mail: repward@capitol.hawaii.gov

H District 18: Portlock, Hawai'i Kai, Kalama Valley



Representative **Mark J. Hashem (D)**
 Hawaii State Capitol, Room 424
 Phone 808-586-6510
 Fax 808-586-6511
 E-Mail: rephashem@capitol.hawaii.gov

H District 19: Wai'alaie-Kāhala, 'Āina Haina, Niu Valley, Kuli'ou'ou



Representative **Ikaika Olds (D)**
 Hawaii State Capitol, Room 326
 Phone 808-586-8515
 Fax 808-586-8519
 E-Mail: repolds@capitol.hawaii.gov

H District 23: Mō'ili'ili, McCully



Representative **Tina Nakada Grandinetti (D)**
 Hawaii State Capitol, Room 304
 Phone 808-586-6310
 Fax 808-586-6311
 E-Mail: repgrandinetti@capitol.hawaii.gov

H District 20: Kāhala, Ka'alāwai, Wai'alaie, Kaimukī, Kapahulu

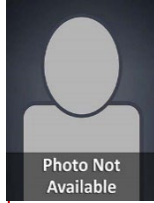


URBAN HONOLULU OAHU
HOUSE OF REPRESENTATIVES DISTRICTS



Representative **Shirley Ann Templo (D)**
Hawaii State Capitol, Room 317
Phone 808-586-6010
Fax 808-586-6011
E-Mail: reptemplo@capitol.hawaii.gov

H District 30: Kalihi, Kalihi Kai, Ke'ehi Lagoon, Hickam Village



Representative **Ikaika Hussey (D)**
Hawaii State Capitol, Room 320
Phone: 808-586-6050
Fax 808-586-6051
E-Mail: rephussey@capitol.hawaii.gov

H District 29: Kamehameha Heights, Kalihi Valley, portion of Kalihi



Representative **Jenna Takenouchi (D)**
Hawaii State Capitol, Room 333
Phone 808-586-9415
Fax 808-586-9421
E-Mail: reptakenouchi@capitol.hawaii.gov

H District 27: Pacific Heights, Nu'uauu, Liliha



Representative **Della Au Belatti (D)**
Hawaii State Capitol, Room 420
Phone 808-586-9425
Fax 808-586-9431
E-Mail: repbelatti@capitol.hawaii.gov

H District 26: Makiki, Punchbowl



Representative **Linda Ichiyama (D)**
Hawaii State Capitol, Room 432
Phone 808-586-6220
Fax 808-586-6221
E-Mail: repichiyama@capitol.hawaii.gov

H District 31: Fort Shafter Flats, Salt Lake, Pearl Harbor



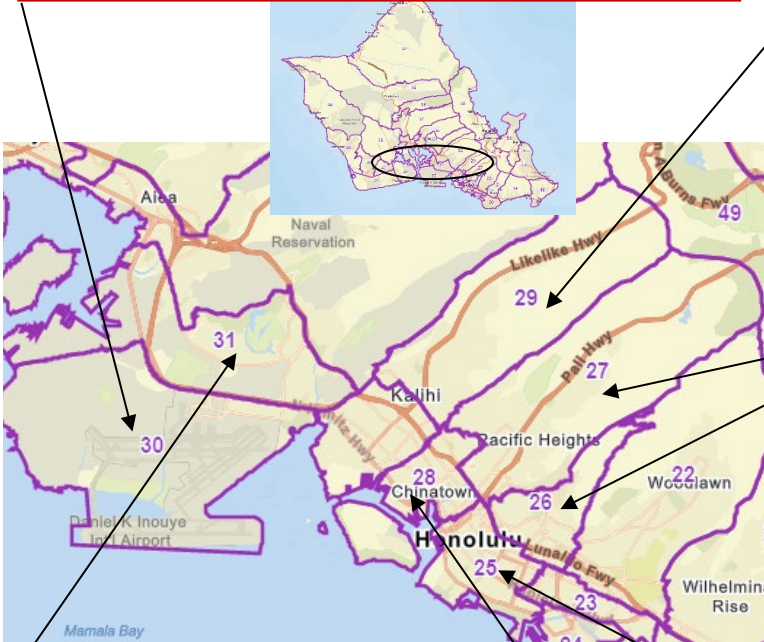
Representative **Kim Coco Iwamoto (D)**
Hawaii State Capitol, Room 327
Phone 808-586-8485
Fax 808-586-8489
E-Mail: repiwamoto@capitol.hawaii.gov

H District 25: Ala Moana, Kaka'ako, Downtown



Representative **Daniel Holt (D)**
Hawaii State Capitol, Room 438
Phone 808-586-6180
Fax 808-586-6189
E-Mail: repholt@capitol.hawaii.gov

H District 28: Sand Island, Iwilei, Chinatown



CENTRAL OAHU
HOUSE OF REPRESENTATIVES DISTRICTS



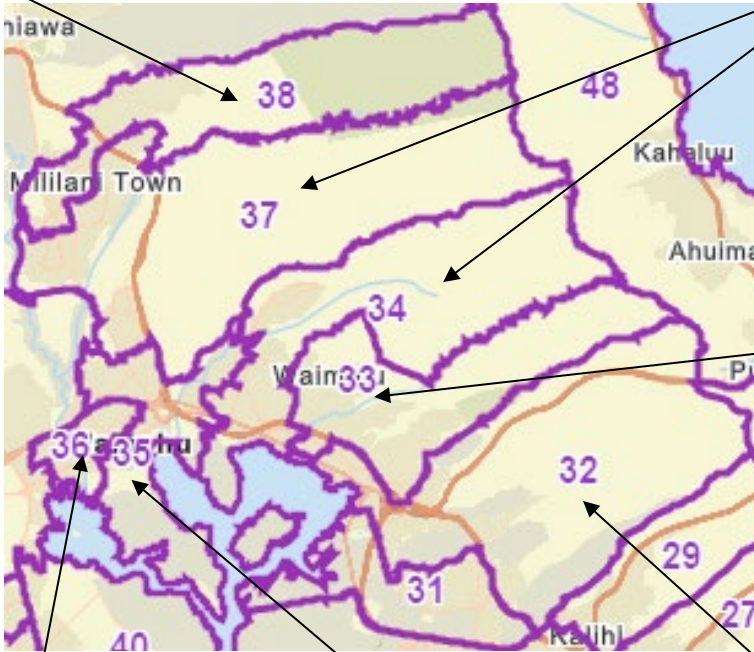
Representative **Lauren Matsumoto (R)**
Hawaii State Capitol, Room 302
Phone 808-586-9490
Fax 808- 586-9496
E-Mail: repmatsumoto@capitol.hawaii.gov

H District 38: Portions of Mililani and Waipio Acres, Mililani Mauka



Representative **Trish La Chica (D)**
Hawaii State Capitol, Room 441
Phone 808-586-6150
Fax 808-586-6151
E-Mail: replachica@capitol.hawaii.gov

H District 37: Portions of Waipi'o and Mililani



Representative **Gregg Takayama (D)**
Hawaii State Capitol, Room 404
Phone 808-586-6340
Fax 808-586-6341
E-Mail: reptakayama@capitol.hawaii.gov

H District 34: Waiiau, a portion of Pearl City, and Pacific Palisades



Representative **Sam Satoru Kong (D)**
Hawaii State Capitol, Room 425
Phone 808-586-8455
Fax 808-586-8459
E-Mail: repkong@capitol.hawaii.gov

H District 33: Portion of Hālawā, 'Aiea, Waimalū



Representative **Garner M. Shimizu (R)**
Hawaii State Capitol, Room 305
Phone 808-586-9470
Fax 808-586-9476
E-Mail: repshimizu@capitol.hawaii.gov

H District 32: Fort Shafter, Moanalua, Āliamanu, Foster Village, portions of 'Aiea and Hālawā



Representative **Rachelle F. Lamosao (D)**
Hawaii State Capitol, Room 316
Phone 808-586-6520
Fax 808-586-6521
E-Mail: replamosao@capitol.hawaii.gov

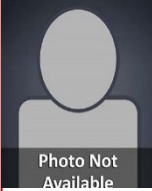
H District 36: Waipahū



Representative **Cory M. Chun (D)**
Hawaii State Capitol, Room 406
Phone 808-586-6170
Fax 808-586-6171
E-Mail: repchun@capitol.hawaii.gov

H District 35: Portions of Pearl City and Waipahū, Crestview

**EWA PLAINS/LEEWARD OAHU
HOUSE OF REPRESENTATIVES DISTRICTS**



Representative **Christopher L. Muraoka (R)**
 Hawaii State Capitol, Room 313
 Phone 808-586-8460
 Fax 808-586-8464
 E-Mail: repmuraoka@capitol.hawaii.gov

H District 45: Wai'anae, Mākaha



Representative **Darius K. Kila (D)**
 Hawaii State Capitol, Room 322
 Phone 808-586-9480
 Fax 808-586-9485
 E-Mail: repkila@capitol.hawaii.gov

H District 44: Honokai Hale, Nānākuli, Mā'ili



Representative **Kanani Souza (R)**
 Hawaii State Capitol, Room 330
 Phone 808-586-8465
 Fax 808-586-8469
 E-Mail: repsouza@capitol.hawaii.gov

H District 43: Kapolei, Makakilo



Representative **Diamond Garcia (R)**
 Hawaii State Capitol, Room 303
 Phone 808-586-8500
 Fax 808-586-8504
 E-Mail: repgarcia@capitol.hawaii.gov

H District 42: Portions of Varona Village, Ewa, and Kapolei, Fernandez Village



Representative **David Alcos III (R)**
 Hawaii State Capitol, Room 324
 Phone 808-586-6080
 Fax 808-586-6081
 E-Mail: repalcos@capitol.hawaii.gov

H District 41: Portion of 'Ewa Beach, Ocean Pointe, Barbers Point



Representative **Elijah Pierick (R)**
 Hawaii State Capitol, Room 318
 Phone 808-586-8490
 Fax 808-586-8494
 E-Mail: reppierick@capitol.hawaii.gov

H District 39: Royal Kunia, portion of Waipahu, Honolulu, portion of Lower Village



Representative **Julie Reyes Oda (R)**
 Hawaii State Capitol, Room 310
 Phone 808-586-9730
 Fax 808-586-9738
 E-Mail: repreyesoda@capitol.hawaii.gov

H District 40: Portions of Lower Village and 'Ewa Beach, Iroquois Point

**NORTH SHORE/WINDWARD OAHU
HOUSE OF REPRESENTATIVES DISTRICTS**



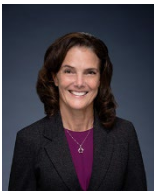
Representative Sean Quinlan (D)
 Hawaii State Capitol, Room 439
 Phone 808-586-6380
 Fax 808-586-6381
 E-Mail: repquinlan@capitol.hawaii.gov

H District 47: Waialua, Hale'iwa, Kawailoa Beach, Waimea, Sunset Beach, Waiale'e, Kawela Bay, Kahuku, Lā'ie, Hau'ula, Punalu'u, Kahana



Representative Mike Lee (D)
 Hawaii State Capitol, Room 314
 Phone 808-586-6480
 Fax 808-586-6481
 E-Mail: replee@capitol.hawaii.gov

H District 50: Kailua, portion of Kāne'ohē Bay



Representative Amy A. Perruso (D)
 Hawaii State Capitol, Room 444
 Phone 808-586-6700
 Fax 808-586-6702
 E-Mail: repperruso@capitol.hawaii.gov

H District 46: Portion of Waipio Acres, Wahiawa, Whitmore Village, Mokuleia



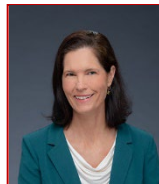
Representative Lisa Kitagawa (D)
 Hawaii State Capitol, Room 435
 Phone 808-586-8540
 Fax 808-586-8544
 E-Mail: repkitagawa@capitol.hawaii.gov

H District 48: Ka'a'awa, Kahalu'u, 'Āhuimanu, He'eia, Kāne'ohē



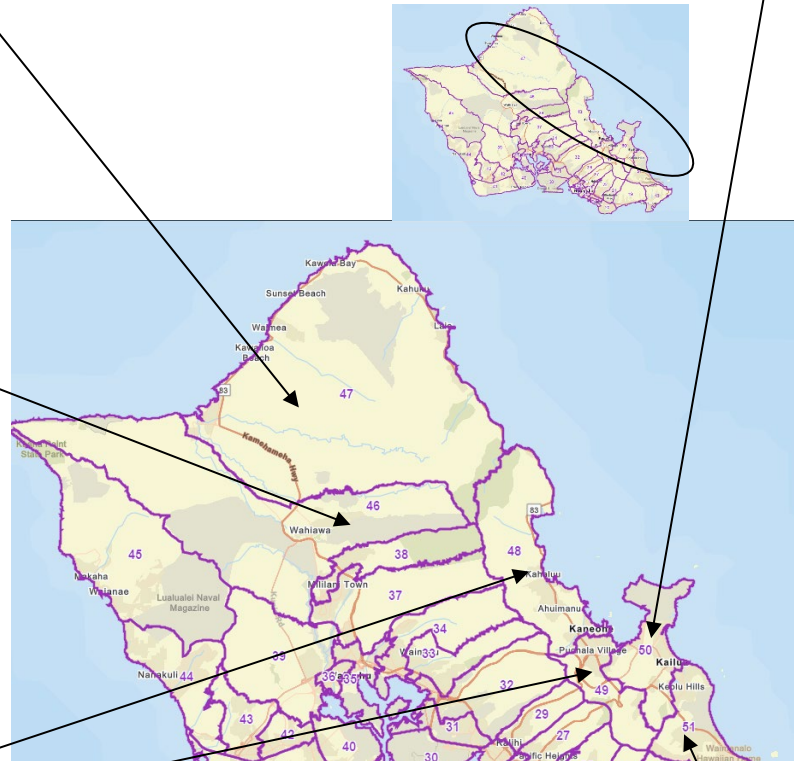
Representative Scot Z. Matayoshi (D)
 Hawaii State Capitol, Room 422
 Phone 808-586-8470
 Fax 808-586-8474
 E-Mail: repmatayoshi@capitol.hawaii.gov

H District 49: Portion of Kāne'ohē, Pū'ōhala Village, Maunawili



Representative Lisa Marten (D)
 Hawaii State Capitol, Room 426
 Phone 808-586-9450
 Fax 808-586-9456
 E-Mail: repmarten@capitol.hawaii.gov

H District 51: Waimānalo, Keolu Hills, Lanikai, portion of Kailua



HONOLULU OAHU SENATE DISTRICTS



Senator Donna Mercado Kim (D)
 Hawaii State Capitol, Room 218
 Phone 808-587-7200
 Fax 808-587-7205
 E-Mail: senkim@capitol.hawaii.gov

S District 14: Kapālama, ʻĀlewa, Kalihi, Kalihi Valley, Ft. Shafter, Moanalua Gardens & Valley, Red Hill



Senator Karl Rhoads (D)
 Hawaii State Capitol, Room 228
 Phone 808-586-6130
 Fax 808-586-6131
 E-Mail: senrhoads@capitol.hawaii.gov

S District 13: Dowsett Highlands, Puʻunui, Nuʻuanu, Pacific Heights, Pauoa, Punchbowl, Pālama, Liliha, Iwilei, Chinatown, and Downtown



Senator Glenn Wakai (D)
 Hawaii State Capitol, Room 407
 Phone 808-586-8585
 Fax 808-586-8588
 E-Mail: senwakai@capitol.hawaii.gov

S District 15: Kalihi, Māpunapuna, Airport, Salt Lake, Āliamanu, Foster Village, Hickam, Pearl Harbor, and portions of ʻAiea and Pearl City



Senator Carol Fukunaga (D)
 Hawaii State Capitol, Room 216
 Phone 808-586-6460
 Fax 808-586-6461
 E-Mail: senfukunaga@capitol.hawaii.gov

S District 11: Mānoa, Makiki/Punchbowl, Tantalus and Papakōlea



Senator Sharon Y. Moriwaki (D)
 Hawaii State Capitol, Room 215
 Phone 808-586-6740
 Fax 808-586-6829
 E-Mail: senmoriwaki@capitol.hawaii.gov

S District 12: Waikīkī, Ala Moana, Kakaʻako, McCully



Senator Les Jr. Ihara (D)
 Hawaii State Capitol, Room 220
 Phone 808-586-6250
 Fax 808-586-6251
 E-Mail: senihara@capitol.hawaii.gov

S District 10: Pālolo, St. Louis Heights, Maunalani Heights, Ala Wai mauka, portions of Kaimukī, Kapahulu, Mōʻiliʻili, McCully



Senator Stanley Chang (D)
 Hawaii State Capitol, Room 226
 Phone 808-586-8420
 Fax 808-586-8426
 E-Mail: senchang@capitol.hawaii.gov

S District 9: Hawaiʻi Kai, Kuliʻouʻou, Niu, ʻAina Haina, Waiʻalae-Kahala, Diamond Head, Kaimukī, Kapahulu

EWA PLAINS/CENTRAL/LEeward OAHU
SENATE DISTRICTS



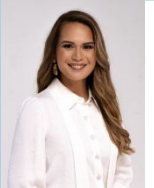
Senator **Michelle N. Kidani (D)**
Hawaii State Capitol, Room 214
Phone 808-586-7100
Fax 808-586-7109
E-Mail: senkidani@capitol.hawaii.gov

S District 18: Mililani Town, Waipi'o Gentry, Crestview, Waikele, portion of Waipahu, Village Park, Royal Kunia



Senator **Donovan M. Dela Cruz (D)**
Hawaii State Capitol, Room 208
Phone 808-586-6090
Fax 808-586-6091
E-Mail: sendelacruz@capitol.hawaii.gov

S District 17: Portion of Mililani, Mililani Mauka, portion of Waipi'o Acres, Launani Valley, Wahiawā, Whitmore Village



Senator **Samantha DeCorte (R)**
Hawaii State Capitol, Room 223
Phone 808-586-7793
Fax 808-586-7797
E-Mail: sendecorte@capitol.hawaii.gov

S District 22: Honokai Hale, Ko 'Olina, Nānākuli, Mā'ili, Wai'anae, Mākaha, Mākua



Senator **Mike Gabbard (D)**
Hawaii State Capitol, Room 201
Phone 808-586-6830
Fax 808-586-6679
E-Mail: sengabbard@capitol.hawaii.gov

S District 21: Portion of Fernandez Village, and portions of 'Ewa, Kapolei, Makakilo, and Kalaeloa



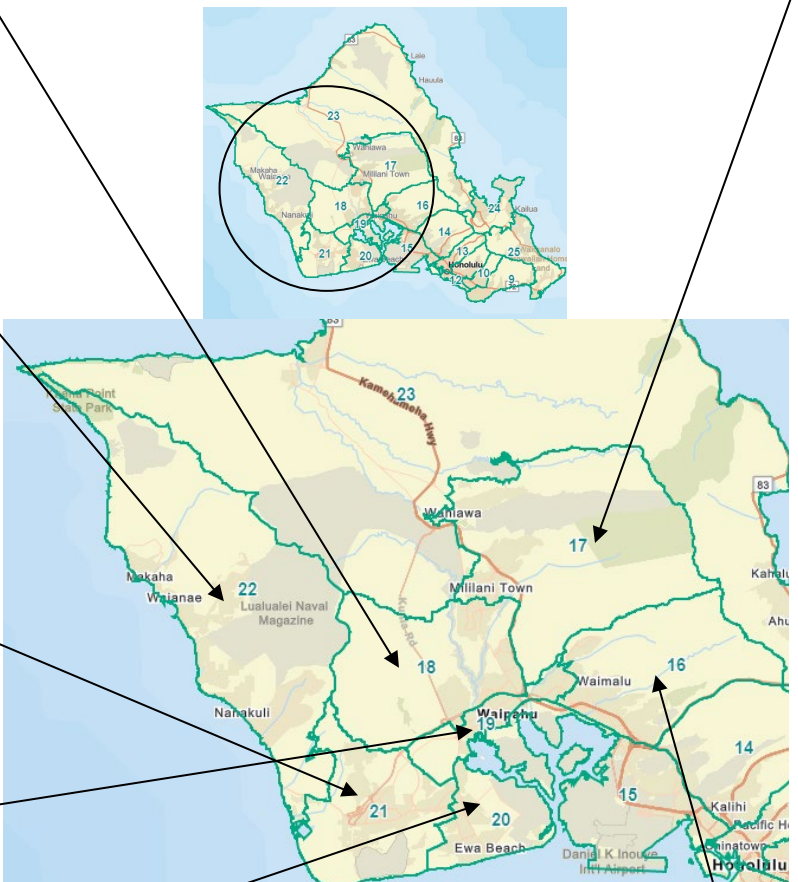
Senator **Henry J.C. Aquino (D)**
Hawaii State Capitol, Room 204
Phone 808-586-6970
Fax 808-586-6879
E-Mail: senaquino@capitol.hawaii.gov

S District 19: Pearl City, Waipahu, West Loch Estates, Hono'uli'uli, Ho'opili



Senator **Kurt Fevella (R)**
Hawaii State Capitol, Room 231
Phone (808) 586-6360
Fax (808) 586-6361
E-Mail: senfevella@capitol.hawaii.gov

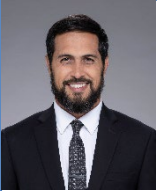
S District 20: 'Ewa Beach, Ocean Pointe, 'Ewa by Gentry, Iroquois Point, portion of 'Ewa Villages



Senator **Brandon J.C. Elefante (D)**
Hawaii State Capitol, Room 217
Phone 808-586-6230
Fax 808-586-6231
E-Mail: senelefante@capitol.hawaii.gov

S District 16: 'Aiea, 'Aiea Heights, Hālawā, Pearlridge, Newtown, Royal Summit, Waimalu, Waiau, Momilani, Pacific Palisades, and Pearl City

NORTH SHORE/WINDWARD OAHU
SENATE DISTRICTS



Senator Brenton Awa (R)
Hawaii State Capitol, Room 203
Phone 808-586-7330
Fax 808-586-7334
E-Mail: senawa@capitol.hawaii.gov



Senator Jarrett Keohokalole (D)
Hawaii State Capitol, Room 205
Phone 808-587-7215
Fax 808-587-7220
E-Mail: senkeohokalole@capitol.hawaii.gov

S District 23: Kāneʻohe, Kahaluʻu thru Lāʻie, Kahuku to Mokulēʻia, Schofield Barracks, Kunia Camp

S District 24: Kāneʻohe, Kailua



Senator Chris Lee (D)
Hawaii State Capitol, Room 219
Phone 808-587-8388
Fax 808-587-7240
E-Mail: senlee@capitol.hawaii.gov

S District 25: Kailua, Waimānalo, Hawaiʻi Kai

**KAUA'I AND NI'HAU
HOUSE OF REPRESENTATIVES DISTRICTS**



Representative **Nadine K. Nakamura (D)**
 Hawaii State Capitol, Room 431
 Phone 808-586-6100
 Fax 808-586-6101
 E-Mail: repnakamura@capitol.hawaii.gov

H District 15: Hā'ena, Wainiha, Hanalei, Princeville, Kīlauea, Anahola, Keālia, Kāpa'a, portion of Wailuā, Kawaihau



Representative **Luke A. Evslin (D)**
 Hawaii State Capitol, Room 427
 Phone 808-586-6270
 Fax 808-586-6271
 E-Mail: repevslin@capitol.hawaii.gov

H District 16: Wailuā, Hanamā'ulu, Kapaia, Līhu'e, Puhi, portion of 'Ōma'o



Representative **Dee Morikawa (D)**
 Hawaii State Capitol, Room 434
 Phone 808-586-6280
 Fax 808-586-6281
 E-Mail: repmorikawa@capitol.hawaii.gov

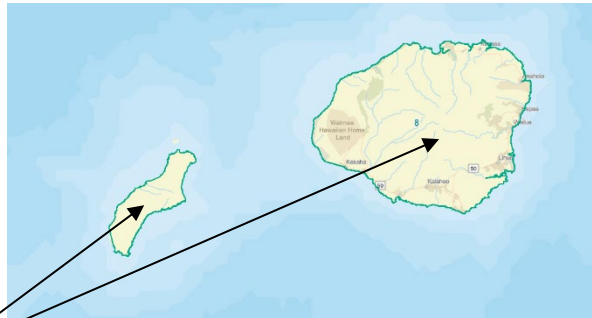
H District 17: Ni'ihau, portion of 'Ōma'o, Kōloa, Po'ipū, Lāwa'i, Kalāheo, 'Ele'ele, Hanapēpē, Kaawanui Village, Pākalā Village, Waimea, Kekaha

**KAUA'I AND NI'HAU
SENATE DISTRICTS**



Senator **Ronald D. Kouchi (D)**
 Hawaii State Capitol, Room 409
 Phone 808-586-6030
 Fax 808-586-6031
 E-Mail: senkouchi@capitol.hawaii.gov

S District 8: Kua'i, Ni'ihau



How to Find Your Legislators

1. Go to the Hawaii State Legislature website at capitol.hawaii.gov
2. Use the drop-down menu on the “Legislature” tab and select "[Find Your Legislator](#)." You can also find the link by using the “My Legislature” shortcut button on the homepage.
3. **Enter your street address** in the search box on the right. Addresses should appear as you type. Select the correct one. (Note: If your search returns “No results,” click on the map of the island the address is on and try again.)

Instead of typing in an address, you can also click the map to place a pin.

4. The map will zoom to your location and display the boundaries of the Senate and House districts the address is in. **To find your legislators, go to the box on the right. Click on “Senate Districts (1) >”** — You’ll be shown your senator, their contact information, and photograph. **Click on “House Districts (1) >”** — You’ll be shown your representative, their contact information, and photograph.
5. To find out more about your legislators, go back to the Legislature’s website, and use the “Legislature” tab’s drop-down menu and select either “[House](#)” or “[Senate](#).” You’ll find buttons for “[Representatives](#)” and “[Senators](#)” on the respective pages. Click on your legislator’s name to visit their webpage.

The screenshot displays the Hawaii State Legislature website interface. At the top, the logo and navigation menu are visible. The 'LEGISLATURE' dropdown menu is open, highlighting 'FIND YOUR LEGISLATOR'. Below this, a 'My Legislature' button is circled in red. The main content area features a satellite map of Honolulu with district boundaries. A search box on the map shows the address '415 S Beretania St, Honolulu, HI, 96813, USA'. A search results panel on the right lists 'Senate Districts (1) >' and 'House Districts (1) >', both circled in red.

[12/12/2024]