

Invest in the PA Breast and Cervical Cancer Early Detection Program: Continued Access to Critical Screenings for Over 32,945 Low-Income Pennsylvanians

Breast and Cervical Cancer in PA

In 2024, an estimated 13,370 Pennsylvanians will be diagnosed with breast cancer and 1,820 will die from the disease. Additionally, an estimated 510 women in PA will be diagnosed with cervical cancer.ⁱ

- Cancers that are found at an early stage are easier to treat and lead to greater survival.ⁱⁱ
- Uninsured and underinsured women have lower screening rates, resulting in a greater risk of being diagnosed at a later, more advanced stage of disease.ⁱⁱⁱ

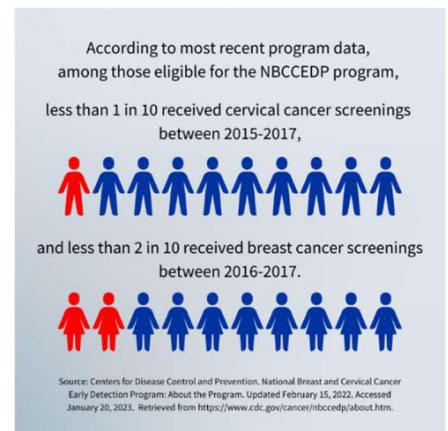
Pennsylvania Breast and Cervical Cancer Early Detection Program

The Pennsylvania Breast and Cervical Cancer Early Detection Program (PA-BCCEDP) provides low-income, uninsured, and underinsured women access to breast and cervical cancer screenings and diagnostic services, including mammograms, Pap tests, HPV tests and diagnostic testing if abnormal results are found.

- 32,945 Pennsylvanians were served by the program between 2017 and 2022.^{iv}
- The program has detected 453 breast cancers and 779 cervical cancers or precancerous lesions.^v

Need for Adequate Funding for this Lifesaving Program

Although access to preventative services has increased through expanded health care coverage and the elimination of most cost-sharing, millions of individuals with low-incomes or who are uninsured still do not have adequate access to breast and cervical cancer screening services. Nationally, according to the National Breast and Cervical Cancer Early Detection Program (NBCCEDP), among those eligible for the program, less than 1 in 10 received cervical cancer screenings (2015-2017) and less than 2 in 10 received breast cancer screenings (2016-2017).^{vi} Maintaining state funding for the Pennsylvania Breast and Cervical Cancer Early Detection Program will preserve a critical safety net for Pennsylvanians who continue to lack access to lifesaving cancer screening, diagnostic, and treatment services for breast and cervical cancers.



Recommendation

The American Cancer Society Cancer Action Network (ACS CAN) is committed to ensuring that all people have the opportunity to receive lifesaving cancer screenings and treatment services. We urge lawmakers to **protect at least \$2.563 million** in state funding for the Pennsylvania Breast and Cervical Cancer Early Detection Program which is vital to the health and wellbeing of Pennsylvania.

ⁱAmerican Cancer Society. *Cancer Facts & Figures 2024*. Atlanta: American Cancer Society; 2024.

ⁱⁱAmerican Cancer Society. *Cancer Prevention & Early Detection Facts & Figures Tables and Figures 2022*. Atlanta: American Cancer Society; 2022.

ⁱⁱⁱAmerican Cancer Society. *Cancer Prevention & Early Detection Facts & Figures Tables and Figures 2022*. Atlanta: American Cancer Society; 2022.

^{iv}Centers for Disease Control and Prevention. National Breast and Cervical Cancer Early Detection Program Screening Program Summaries, retrieved from <https://www.cdc.gov/cancer/nbccedp/screenings.htm#PA>.

^vCenters for Disease Control and Prevention. National Breast and Cervical Cancer Early Detection Program Screening Program Summaries, retrieved from <https://www.cdc.gov/cancer/nbccedp/screenings.htm#PA>.

^{vi}Centers for Disease Control and Prevention. National Breast and Cervical Cancer Early Detection Program: About the program. Accessed January 26, 2023. Retrieved from <https://www.cdc.gov/cancer/nbccedp/about.htm>.